

Custom Install

Architectural loudspeakers



Engineered to entertain

DYNAUDIO



- 4 Performance series**
- 10 Studio series**
- 14 Studio LCR**
- 18 Subwoofer**
- 22 About Dynaudio**

Heard. Not seen.

Easy specification, tool-free installation, plug-and-play operation. Here's everything you need to know about Dynaudio Custom Install.

They're all but invisible, but you'll know they're there. Dynaudio Custom Install takes everything we know about speaker design... and tailors it just for you.

It shouldn't be hard to get great sound. When we set out to design our custom-install architectural speakers, we knew they had to be simple to understand, neat and easy to install, and flexible enough to work in even the most challenging listening environments.

Most importantly, our range of in-ceiling and in-wall speakers had to sound every bit as good as our acclaimed free-standing hi-fi and pro-audio models. There was no room for compromise – and we didn't stop until we'd nailed it.

The whole Dynaudio Custom Install range harnesses the same core technology, expertise, fanatical attention to detail and sheer love of music that's made our hi-fi, professional studio and in-car speakers so celebrated. It's the same stuff – it's just inside the walls instead of in front of them.

It's a system that works around you, too. Pick between our in-wall or in-ceiling speakers, or even combine the two. The frames can then be pre-installed during renovation and decorating, or retrofitted into existing cavities. You can even paint their magnetic grilles to suit your décor. And then, when it's time, fine-tune the speakers' positions – so everything's exactly right, first time.

When you hear Dynaudio Custom Install, you're hearing decades of research, care and pride. Only this time, it's tailored just for you.

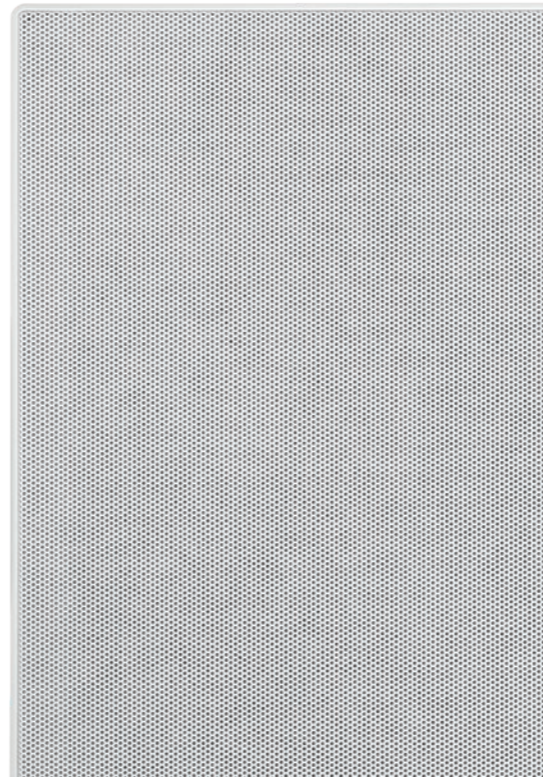
Dynaudio Custom Install Performance series

**The right fit for hi-res listening and distributed audio.
It's as simple as that.**

The Performance series brings true Dynaudio hi-fi quality to the tightest cavities in ceilings and walls. No more having to choose between deep and shallow versions of in-wall and in-ceiling speakers when specifying a system. No more having to choose between performance and fit. And no more fiddly install processes: just twist and lock into place.

We've developed ingenious ways of putting everything that makes our speakers legendary – soft-dome tweeters, MSP drivers, large voice-coils and powerful magnets – into a form that lets you work around the nasty surprises you find behind the drywall. And the sound? Simply jaw-dropping. Naturally.

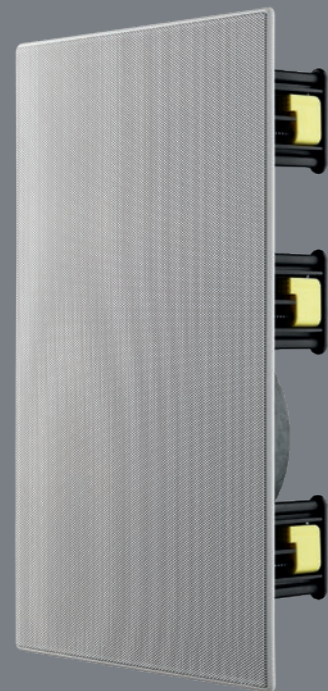
Don't compromise. Just fit, finish and enjoy.



P4-W65

P4-W80

P4-LCR50



P4-W80



P4-W80

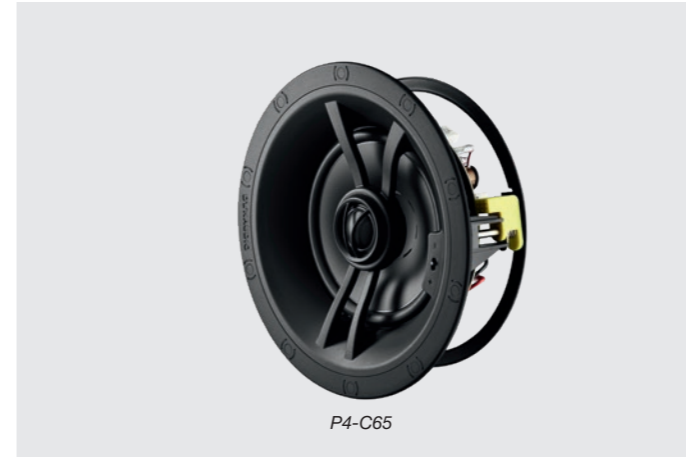
| Model | P4-W65 | P4-W80 | P4-LCR50 |
|-----------------------------------|---|---|---|
| Type | Two-way in-wall | Two-way in-wall | Two-way in-wall |
| Drivers | Tweeter: 28mm (1 1/8in); mid/bass: 165mm (6 1/2in) | Tweeter: 28mm (1 1/8in); mid/bass: 200mm (8in) | Tweeter: 28mm (1 1/8in); mid/bass: 2x130mm (5in) |
| Frequency response (+/- 3dB) | 46Hz – 20kHz | 46Hz – 20kHz | 42Hz – 20kHz |
| Impedance (nominal/minimum) | 8Ω / 5Ω | 8Ω / 5Ω | 4Ω / 3.2Ω |
| Sensitivity (dB SPL [2.83V / 1m]) | 87.5dB | 89dB | 89dB |
| Continuous power* | 40W | 50W | 50W |
| Long term power* | 80W | 160W | 100W |
| Tweeter level options | -3dB, 0dB, +3dB | -3dB, 0dB, +3dB | +3dB, 0dB, -3dB |
| Dimensions (W x H x D) | 198 x 296 x 63mm (7 3/4 x 11 1/8 x 2 1/2in) | 237 x 392 x 77mm (9 3/8 x 15 3/8 x 3in) | 360 x 195 x 77mm (14 1/4 x 7 3/4 x 3in) |
| Cut-out dimensions | 175 x 275mm (6 7/8 x 10 7/8in) | 215 x 370mm (8 1/2 x 14 5/8in) | 175 x 340mm (6 7/8 x 13 3/8in) |
| Grille options | Rectangular | Rectangular | Rectangular |

* Measured according to IEC 60268-5 using a pink noise input signal.

Continuous is 100 hours of operation. *Long-term* is 10 cycles of one minute on and two minutes off.

Fit and finish

The low-profile magnetic grilles snap into place in exactly the correct position. You can also paint them to match the room's décor.



| Model | P4-C65 | P4-DVC65 | P4-C80 |
|-----------------------------------|---|--|--|
| Type | Two-way in-ceiling | Two-way in-ceiling | Two-way in-ceiling |
| Drivers | Tweeter: 28mm (1 ¹ / ₄ in); mid/bass: 165mm (6 ¹ / ₂ in) | 2x tweeter: 28mm (1 ¹ / ₄ in); mid/bass: 165mm (6 ¹ / ₂ in) | Tweeter: 28mm (1 ¹ / ₄ in); mid/bass: 200mm (8in) |
| Frequency response (+/- 3dB) | 46Hz – 20kHz | 46Hz – 20kHz | 42Hz – 20kHz |
| Impedance (nominal/minimum) | 8Ω / 5Ω | 2x 4Ω / 2x 3.2Ω | 8Ω / 5Ω |
| Sensitivity (dB SPL [2.83V / 1m]) | 87.5dB | 87.5dB | 89dB |
| Continuous power* | 40W | 2x 20W | 50W |
| Long-term power* | 80W | 2x 40W | 160W |
| Tweeter-level options | -3dB, 0dB, +3dB | -3dB, 0dB | -3dB, 0dB, +3dB |
| Tweeter orientation | Pivoting 360° | Fixed | Pivoting 360° |
| Dimensions/depth | Ø 232mm / 72mm (Ø 9 ¹ / ₈ / 2 ⁷ / ₈ in) | Ø 232mm / 76mm (Ø 9 ¹ / ₈ / 3in) | Ø 280mm / 90mm (Ø 11 / 3 ⁵ / ₈ in) |
| Cut-out dimensions | Ø 210mm (Ø 8 ¹ / ₄ in) | Ø 210mm (Ø 8 ¹ / ₄ in) | Ø 260mm (Ø 10 ¹ / ₄ in) |
| Grille options | Round (supplied) square (optional) | Round (supplied) square (optional) | Round (supplied) square (optional) |

* Measured according to IEC 60268-5 using a pink noise input signal.

'Continuous' is 100 hours of operation. 'Long-term' is 10 cycles of one minute on and two minutes off.



Performance series **Fire-rated back-box**

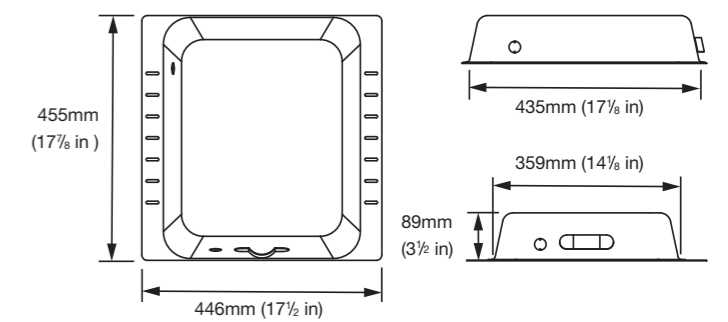


Safety first if the temperature rises.

The Dynaudio fire-rated back-box is a shallow-depth metal enclosure for use with all our Performance series in-ceiling and in-wall speakers.

The casing is filled with Morgan Superwool Plus lining for temperature resistance up to 1200°C for one hour in accordance with local building regulations.

It mounts in standard 16-inch-on-centre stud-bays – no cutting required.



| Model | Dynaudio FRBB-S |
|------------------------|---|
| Type | Fire-rated back-box |
| Dimensions (W x H x D) | 446 x 455 x 89mm (17½ x 17¾ x 3½ in) |
| Internal volume | 18L |

Dynaudio Custom Install Studio series

Hair-raising quality for active listening, media rooms, home cinema and more.

When you want audio to grab your audience, stop them in their tracks and captivate them, you need a special-sounding system. The Studio range is that system.

We've used elements taken directly from our award-winning home hi-fi and pro studio products and engineered them into a form that fits discreetly into in-wall and in-ceiling specifications without making the compromises you might find elsewhere. They're a breeze to install thanks to their clever frame-locking system, and the ceiling models are easy to fine-tune in place using their innovative rotating speaker/tilting tweeter assembly.

Quality sound, installed where you need it – and focussed where your client wants it.



S4-W65



S4-W80

| Model | S4-W65 | S4-W80 |
|-----------------------------------|--|---|
| Type | Two-way in-wall | Two-way in-wall |
| Drivers | Tweeter: 28mm (1 1/8in); mid/bass: 165mm (6 1/2in) | Tweeter: 28mm (1 1/8in); mid/bass: 200mm (8in) |
| Frequency response (+/- 3dB) | 55Hz – 20kHz | 45Hz – 20kHz |
| Impedance (nominal/minimum) | 8Ω / 5Ω | 8Ω / 5Ω |
| Sensitivity (dB SPL [2.83V / 1m]) | 87.5dB | 89.0dB |
| Continuous power* | 50W | 100W |
| Long-term power* | 125W | 140W |
| Tweeter level options | -3dB, 0dB, +3dB | -3dB, 0dB, +3dB |
| Dimensions (W x H x D) | 198 x 296mm / 90mm (7 3/4 x 11 1/2in / 3 9/16in) | 237 x 392mm / 99mm (9 3/8 x 15 3/8in / 3 13/16in) |
| Cut-out dimensions | 175 x 275mm (6 7/8 x 10 3/4in) | 215 x 370mm (8 1/2 x 14 9/16in) |
| Grille material | Painted steel | Painted steel |
| Grille options | Rectangular | Rectangular |
| Grille attachment | Magnetic | Magnetic |
| Grille finish | White (paintable) | White (paintable) |

* Measured according to IEC 60268-5 using a pink noise input signal.

Continuous is 100 hours of operation. *Long-term* is 10 cycles of one minute on and two minutes off.

Total control

The in-ceiling speaker unit can rotate in its frame to direct the woofer to the listening position, and the tweeter tilts for even more focus.



| Model | S4-C65 | S4-DVC65 | S4-C80 |
|-----------------------------------|--|---|--|
| Type | Two-way in-ceiling | Two-way in-ceiling | Two-way in-ceiling |
| Drivers | Tweeter: 28mm (1 1/8in); mid/bass: 165mm (6 1/2in) | 2x tweeter: 28mm (1 1/8in); mid/bass: 165mm (6 1/2in) | Tweeter: 28mm (1 1/8in); mid/bass: 200mm (8in) |
| Frequency response (+/- 3dB) | 55Hz – 20kHz | 50Hz – 20kHz | 45Hz – 20kHz |
| Impedance (nominal/minimum) | 8Ω / 5Ω | 2x 4Ω / 2x 3.2Ω | 8Ω / 5Ω |
| Sensitivity (dB SPL [2.83V / 1m]) | 87.5dB | 83.5dB | 89dB |
| Continuous power* | 50W | 2x 50W | 100W |
| Long-term power* | 125W | 2x 100W | 140W |
| Tweeter level options | -3dB, 0dB, +3dB | -3dB, 0dB | -3dB, 0dB, +3dB |
| Tweeter orientation | Three tilt angles | Three tilt angles | Three tilt angles |
| Mid/bass orientation | 18° x 360° | 18° x 360° | 18° x 360° |
| Dimensions/depth | Ø 232mm / 155mm (Ø 9 1/8in / 6 1/8in) | Ø 232mm / 167mm (Ø 9 1/8in / 6 5/8in) | Ø 280mm / 163mm (Ø 11in / 6 3/8in) |
| Cut-out dimensions | Ø 210mm (Ø 8 3/8in) | Ø 210mm (Ø 8 3/8in) | Ø 260mm (Ø 10 1/4in) |
| Grille material | Painted steel | Painted steel | Painted steel |
| Grille options | Round (supplied) / square | Round (supplied) / square | Round (supplied) / square |
| Grille attachment | Magnetic | Magnetic | Magnetic |
| Grille finish | White (paintable) | White (paintable) | White (paintable) |

* Measured according to IEC 60268-5 using a pink noise input signal. 'Continuous' is 100 hours of operation. 'Long-term' is 10 cycles of one minute on and two minutes off.

Dynaudio Custom Install Studio LCR

The modular custom install system that places quality front and centre.

No stud-cutting. No restrictions. No hassle. The Studio LCR system lets you create personalised vertically or horizontally oriented left, centre and right three-way speaker channels while allowing simplified installation – even letting you work around studs or matching the dimensions of the TV for a cleaner look.

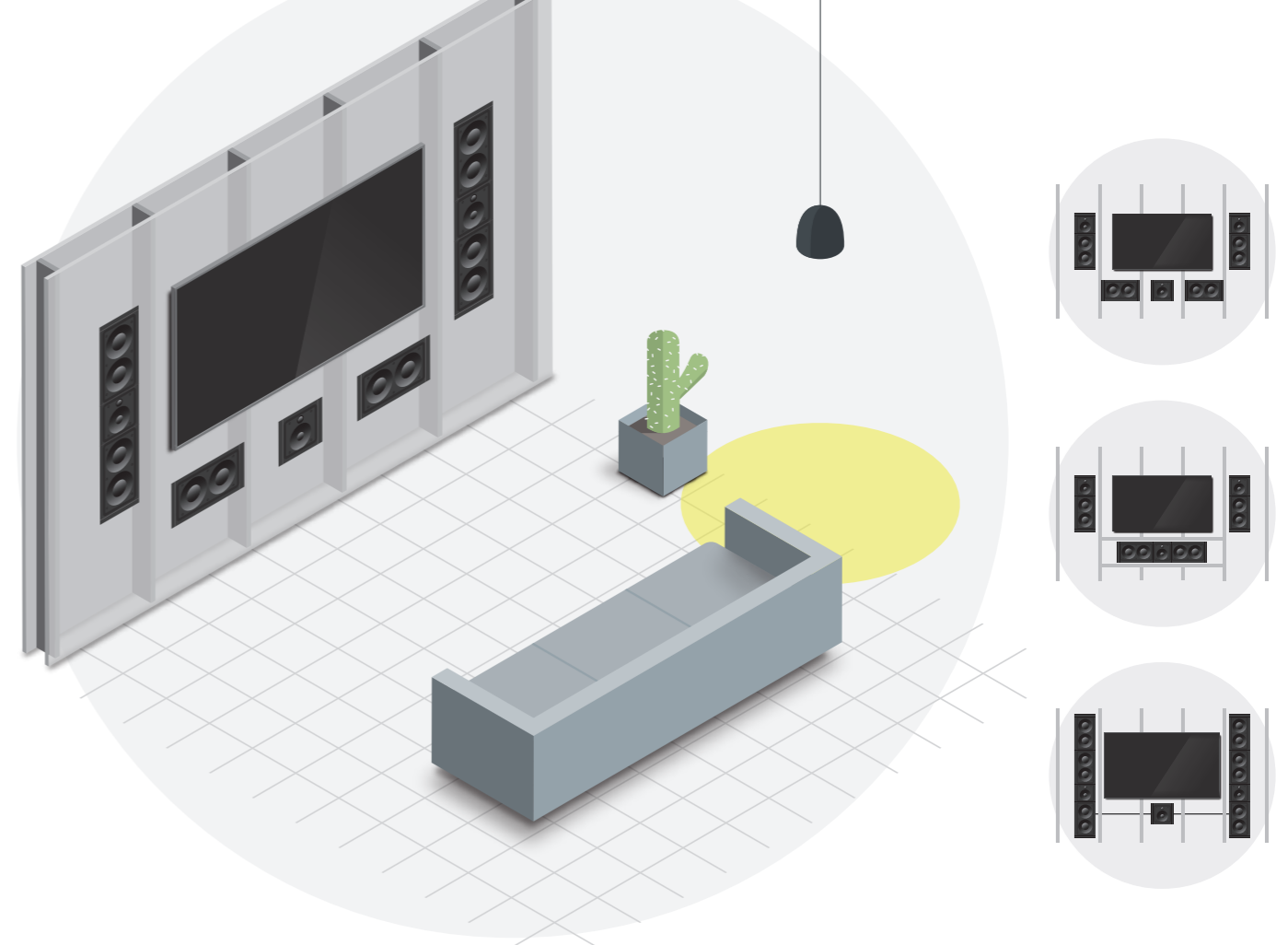
That means you can meet exact SPL requirements with ease, including THX and Dolby reference levels at up to 4m listening distance.

The system's modular design means incredible flexibility: the S4-LCR65MT mid/tweeter and S4-LCR65W woofer modules fit around standard 16in studs (so you don't have to cut them).

You can position the tweeter either way up and at any height in the array (so the listener gets total focus). And the modules are easily connected using speaker wire, with their frames either connected together and installed in a single cut-out, or spaced apart in multiple cut-outs to create a single channel.

Each module uses a passive crossover with a three-position switch on the mid/tweeter module pre-configured to typical LCR channel configurations that use one or two connected woofer modules. There's also a bypass position to enable a vast number of fully active and completely customised S4-LCR65 system set-ups with external DSP processing and a dedicated amp channel for every driver in each channel.

And, like the rest of the Dynaudio Custom Install range, all the modules mount into their frames without any tools required.



S4-LCRMT



S4-LCR65W

| Model | S4-LCRMT | S4-LCR65W |
|-----------------------------------|---|--|
| Type | Two-way in-wall mid/tweeter module | Twin-driver in-wall bass module |
| Drivers | Tweeter: 28mm (1 ¹ / ₂ in); mid/bass: 100mm (4in) | 2x 165mm (6 ¹ / ₂ in) |
| Frequency response (+/- 3dB) | 250Hz – 20kHz | 35 – 300Hz |
| Impedance (nominal/minimum) | 8Ω / 5Ω | 8Ω / 4.6Ω |
| Sensitivity (dB SPL [2.83V / 1m]) | 89±3dB (250Hz – 20kHz) | 86±3dB (40Hz – 250Hz) |
| Continuous power* | 50W | 50W |
| Long-term power* | 150W | 200W |
| Tweeter level options | +3dB, 0dB, -3dB | N/A |
| Dimensions (W x H x D) | 235 x 213 / 90mm (9 ¹ / ₄ x 8 ³ / ₈ / 3 ³ / ₈ in) | 395 x 213mm / 90mm (15 ¹ / ₂ x 8 ³ / ₈ / 3 ³ / ₈ in) |
| Cut-out dimensions | 190 x 213mm (7 ¹ / ₂ x 8 ³ / ₈ in) | 190 x 373mm (7 ¹ / ₂ x 14 ¹ / ₈ in) |
| Grille material | Painted steel | Painted steel |
| Grille options | Rectangular | Rectangular |
| Grille attachment | Magnetic | Magnetic |
| Grille finish | White (paintable) | White (paintable) |

* Measured according to IEC 60268-5 using a pink noise input signal. 'Continuous' is 100 hours of operation. 'Long-term' is 10 cycles of one minute on and two minutes off.



Custom grille

Want more? You've got it. Just cut it to fit and install the end-caps for a seamless appearance. All grilles are 230mm (9in) in height

1319mm
(51¹⁵/₁₆in)

1x S4-LCRMT + 2x S4-LCR65W

We've got the ultimate LCR system covered

985mm
(38³/₄in)

1x S4-LCRMT + 1x S4-LCR65W

Want to combine a woofer module with a midrange? There's a grille for that too

614mm
(24³/₁₆in)

1x S4-LCR65W

Rectangular grille for the twin-woofer module

424mm
(10¹/₁₆in)

1x S4-LCRMT

Square grille for the midrange/tweeter module

264mm
(10³/₈in)

Dynaudio Custom Install Sub RCC

A new foundation for custom audio: clear, deep, undistorted bass that dives all the way down to 16Hz.

High-quality low-frequency delivery for the most demanding installation projects. Sub RCC installs in walls and ceilings, either on the surface or into standard 2x4 stud-bays either before or after construction (and we've included brackets for both situations in the box).

It uses four drive-units in a clever opposed Reactance Cancellation Configuration (RCC) that's derived from our professional studio subwoofers. This eliminates vibrations to leaving only the acoustic energy – and truly high-calibre bass performance.

We have partnered with Audio Control for the system amplification, using their RS500 amplifier. The RS500 allowed our engineers to maximise the performance of the Sub RCC's four long throw race track woofers through sophisticated DSP tuning, which comes pre-loaded on the amplifier, keeping the set up nice and simple.



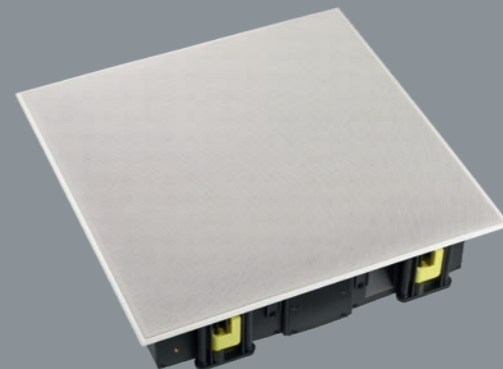
Sub RCC can be mounted in walls and ceilings, either on the surface or between studs. Adapters are provided to make the job even easier.



Sub RCC with surface-mount plates



Pre-construction mount with slimline grille



Surface-mount with magnetic grille

| Model | Sub RCC |
|---|---|
| Type | In-wall subwoofer |
| Drivers | 4x 3x6in long-throw |
| Performance frequency response (+/- 3 dB) | 20Hz – 145Hz |
| Impedance (nominal/minimum) | 8Ω / 5Ω |
| Sensitivity (dB SPL [2.83 V/1 m]) | 92dB |
| Continuous power* | 160W |
| Long term power* | 400W |
| Dimensions pre-fit (W x H x D) | 355 x 354 x 101mm (14 x 14 x 4in) |
| Dimensions retro-fit (W x H x D) | 400 x 400 x 101mm (15 3/4 x 15 3/4 x 4in) |
| Cut-out dimensions retro-fit | 366 x 366mm (14 3/8 x 14 3/8in) |

* Measured according to IEC 60268-5 using a pink noise input signal. 'Continuous' is 100 hours of operation. 'Long-term' is 10 cycles of one minute on and two minutes off.

| Model | Audio Control RS500 DSP |
|-------------------------|--|
| Continuous Power output | 500W into 4Ω and 8Ω |
| Maximum load | 2 * Sub RCC |
| Frequency response | 15Hz – 350Hz |
| S/N Ratio | > 98dB, A-Wtd, Ref. Full Output |
| Input | 1 XLR, 1 LFE, 2 RCA, 1 Speaker Level |
| Loop outputs | 1 XLR 1LFE 2 RCA |
| Power | 230VAC, 50/60Hz |
| Dimensions (W x H x D) | 430 x 445 x 45 (1U)mm (17 x 17 1/2 x 1 3/4 (1U)in) |

About Dynaudio

Making hi-fi right from the start

Back in 1977 Dynaudio's founder, Wilfried Ehrenholz, decided that the off-the-shelf speakers available at the time weren't telling the whole truth. He and his colleagues started out by putting drivers made by other companies into tweaked cabinets, with crossovers designed and built in-house. But they still weren't right: the drivers weren't up to par. And we all know there's only one way to get something right if no one else can do it...

But it wasn't just a dive-straight-in job. They did their homework. Dynaudio was reaching for the next level; a level its established competitors – some of whom were leviathans of the hi-fi industry – either couldn't get to, or hadn't even realised existed. The goal? To stop picking apart frequencies and just... sit. Listen. Enjoy. "If a musician expresses what's in the music, when you listen to it you aren't analysing it, it's just emotion," Wilfried said.

That philosophy – that pursuit of truth through emotion – permeates the entire company. There's always another level to hit. "I'm very proud that we kept all our principles from the beginning; we didn't have to change anything. Most concepts we started are still valid after more than 40 years," Wilfried said.

The drivers sit at the heart of it all. We develop and manufacture them ourselves – right down to magnetising the magnets and winding the voice-coils. Winding is an automated process these days (although even the robots we built can't escape the eagle eyes or ears of our quality-control people), but at one point even this was done by expert pairs of hands.



We kept all our principles from the beginning. Most concepts we started are still valid after more than 40 years.

Most of our voice-coils are aluminium instead of copper. It's lighter, which lets us double the coil diameter for any given weight. It also lets us use longer windings for longer driver excursion and better heat dissipation. (In English, that means we have tighter control over the sound.) Others are made from copper when we need extra power. We use the best material for the job... which means you get the best performance we can deliver.

There are some details you won't even see – like the spider. That's the springy piece of material that acts as the voice-coil's suspension. It controls how much the coil moves back and forth, and how much air there is behind the speaker cone. We've improved its symmetry by measuring, simulating and, ultimately, listening. It all sits in the basket. That's the physical housing for the whole driver motor. We've spent just as much time refining it as we have every other part of our speakers. It's made to reduce turbulence behind the driver, which, again, helps them sound their best.

Then there are our signature soft-dome tweeters. We've been refining our designs ever since we started the company: geometry, shape, materials, stiffness... even the precision coating. Because Dynaudio tweeters aren't made of metal, they have a flatter, more linear frequency response – which means more honest performance.

But, in the end, it all comes down to our people. They're fanatical about what they do, and they're incredibly proud of what they produce. We hope you'll be proud to specify our speakers in your projects, too.

Home

We've been making jaw-dropping high-end hi-fi speakers since the beginning – listen to them and find something new in your music
Pictured: Confidence 30



Pro

Think of your favourite record or movie. Chances are, Dynaudio Pro speakers were used in its production.

Car

We make high-end audio systems for Volkswagen – so you can feel more relaxed when you get out of the car than you were when you got in.



About Dynaudio Home, car, studio and beyond

You'll find Dynaudio products in homes, recording studios and cars all over the world. We've built an audio ecosystem like no other.

When you listen to a Dynaudio speaker, wherever you're playing it, you're listening to more than 45 years of experience. But more than that, you're listening to everything the artist who recorded the track wants you to hear. In many cases you can draw a line right from the original recording to your listening space – our studio speakers are used all over the world, outputting nothing but the artists' raw emotion. And that shines through when you're sitting in your living room, your home cinema or even your car listening to our speakers, too. They tell the truth; nothing more, nothing less.

We are Dynaudio, and we've been making quality loudspeakers since 1977.



Dynaudio Labs

We don't leave anything to chance. Our R&D department, Dynaudio Labs, is full of brilliant minds and cutting-edge technology... including Jupiter, our massive, state-of-the-art 13 x 13 x 13m robotic measuring facility.

Dynaudio A/S
8660 Skanderborg
Denmark

dynaudio.com

All text and image copyrights reserved.
Subject to change without notice.
Item no. 466730D

DYNAUDIO